

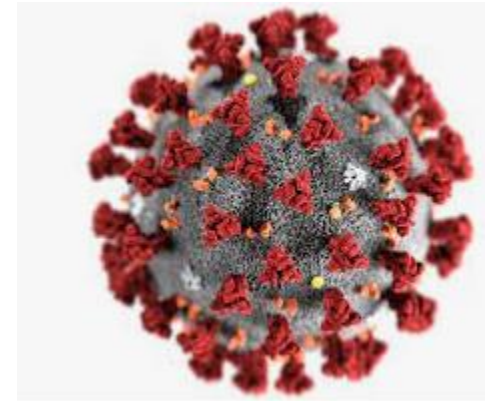
2018 Bond - Update

- Total Bond Expenditures
- Project Update

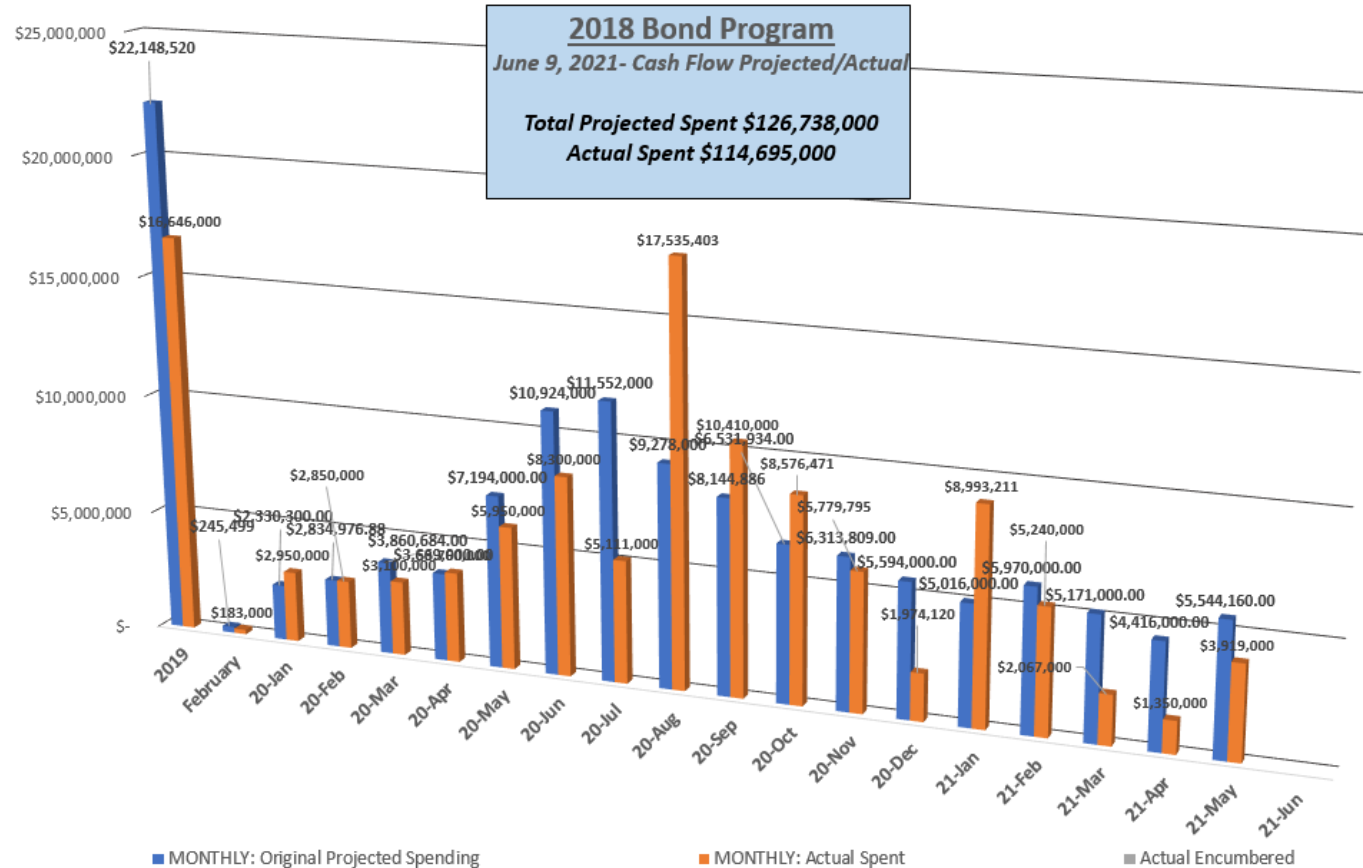


General Items

- COVID19 Update
- Contingency Update
- CBMS/Consolidation – Project Update



Monthly– Cash Flow Diagram



Total Bond Expenditures

Feeder <input type="button" value="v"/>	Total Bond Budget	Total Amount Encumbered
<input type="button" value="+"/> BHS	\$18,673,975.91	\$17,364,638.11
<input type="button" value="+"/> DW	\$51,668,503.56	\$28,687,079.65
<input type="button" value="+"/> LHS	\$22,264,618.30	\$12,780,901.42
<input type="button" value="+"/> MVHS	\$65,956,722.25	\$60,172,763.25
<input type="button" value="+"/> TVHS	\$38,919,898.50	\$35,109,680.41
Grand Total	*\$197,483,718.52	\$154,115,062.84

* Original Bond \$149,000,000
Added Bond Premium \$ 41,180,574
Grants (Head Start / BEST) Remaining

Berthoud High School - Feeder

Feeder	Total Bond Budget	Total Amount Encumbered
<input type="checkbox"/> BHS	\$18,673,975.91	\$17,364,638.11
Berthoud Elementary	\$5,201,926.00	\$4,699,924.18
Berthoud High School	\$5,812,620.00	\$5,520,656.54
Ivy Stockwell Elementary	\$4,463,063.50	\$4,315,349.91
Turner Middle School/ECE	\$3,196,366.41	\$2,828,707.48

Thompson Valley HS - Feeder

Feeder	Total Bond Budget	Total Amount Encumbered
<input type="checkbox"/> TVHS	\$38,919,898.50	\$35,109,680.41
Carrie Martin Elementary	\$1,165,537.00	\$1,055,843.27
Namaqua Elementary School	\$1,447,891.00	\$1,223,633.19
Sarah Milner Elementary School	\$1,203,018.50	\$1,021,439.31
Thompson Valley High School	\$9,055,243.00	\$8,073,672.29
TCC/FHS @ VBES	\$18,694,169.00	\$18,356,484.73
Walt Clark Middle School	\$3,468,547.50	\$2,058,993.41



Mountain View HS - Feeder

Feeder	Total Bond Budget	Total Amount Encumbered
<input type="checkbox"/> MVHS	\$65,956,722.25	\$60,172,763.25
Conrad Ball Middle School	\$2,441,730.00	\$323,992.13
High Plains	\$107,205.00	\$12,588.83
Mary Blair Elementary School	\$1,593,873.50	\$131,574.91
Monroe Elementary School/ECE	\$1,883,871.25	\$1,453,235.57
Mountain View High School	\$6,073,465.00	\$5,831,361.52
New PK8	\$45,746,658.00	\$44,769,135.49
Stansberry Elementary School	\$6,837,485.50	\$6,606,814.93
Winona Elementary School	\$1,272,434.00	\$1,044,059.87

Loveland HS - Feeder

Feeder	Total Bond Budget	Total Amount Encumbered
<input type="checkbox"/> LHS	\$22,264,618.30	\$12,780,901.42
Bill Reed Middle School	\$3,134,777.75	\$2,742,812.60
Centennial Elementary School	\$1,081,133.50	\$170,118.94
Cottonwood Elementary School	\$1,235,504.50	\$129,190.90
Coyote Ridge Elementary School	\$847,113.50	\$85,163.82
Garfield Elementary	\$1,588,793.50	\$1,485,355.80
L. Edmondson Elementary/ECE	\$1,160,290.25	\$204,878.03
Lincoln Elementary School	\$1,299,123.50	\$1,126,391.17
Loveland High School	\$7,270,642.80	\$6,544,624.75
Lucile Erwin Middle School	\$2,377,599.50	\$135,323.95
Ponderosa Elementary School	\$746,421.00	\$75,038.82
Truscott Elementary School	\$1,523,218.50	\$82,002.64



District Wide - Summary

Feeder	Total Bond Budget	Total Amount Encumbered
<input type="checkbox"/> DW	\$51,668,503.56	\$28,687,079.65
Bond Contingency	\$10,142,184.89	\$0.00
Bond Inflation	\$3,695,396.03	\$0.00
Bond Management	\$3,443,915.93	\$1,392,097.51
Charter Schools	\$1,300,000.00	\$1,000,947.33
Community Connections	\$386,296.75	\$39,072.83
District Wide Furniture	\$4,972,500.00	\$1,776,246.06
Environmental	\$985,120.96	\$163,512.19
Ferguson High School	\$915,727.50	\$396,788.81
Roofing	\$12,757,097.00	\$11,713,198.97
Security	\$5,637,000.00	\$5,601,560.42
Support Buildings/DW Projects/IT	\$7,433,264.50	\$6,603,655.53



Large Project Update

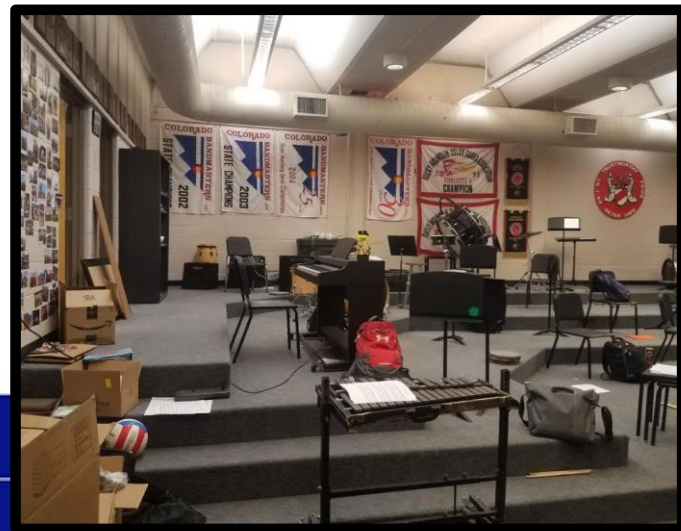
Riverview PK8 – On schedule. Community Tours Completed. Supplies & FFE deliveries start NEXT WEEK! Principal/Office Manager/Custodian there part time.

Berthoud Schools – TMS / BHS abatement. Finish Ivy Stockwell ES/BES.

LHS / MVHS / TVHS Feeders – All contracts in, BEST scope incorporated. LHS music risers.

TCC / FHS – Grand Opening September 21st.

Roofing - Lincoln ES, Laurene Edmondson ES, Ivy Stockwell ES, Bill Reed MS, Administration, TVHS.



Other Projects

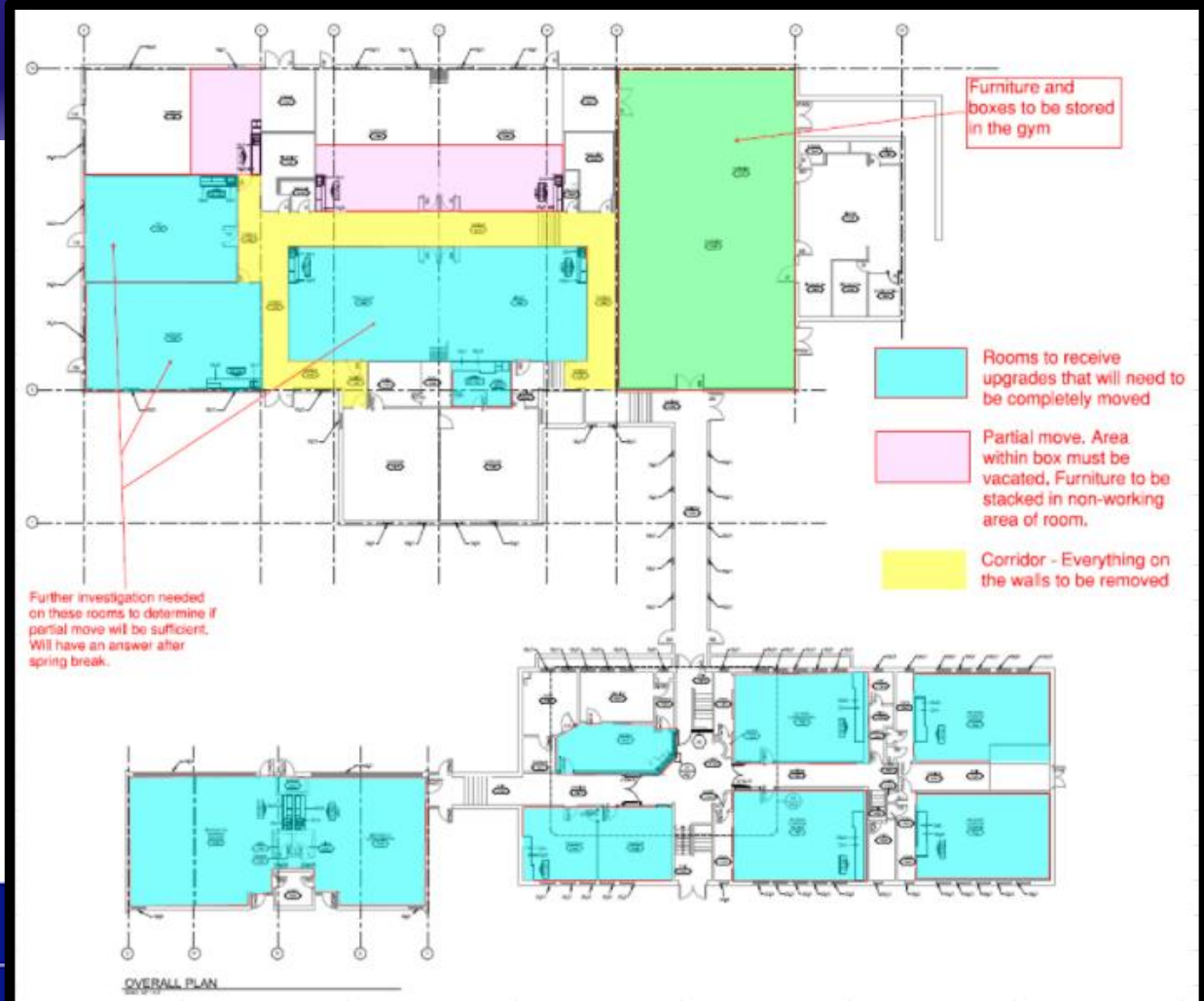
Assist the District:

- Catering Evaluations
- Gender Neutral Bathroom studies
- Coordination with Modular Removals
- BEST Grant applications/implementation
- Student Engagement
- Partners and New Projects
- ID and Report facility conditions

Summer Work

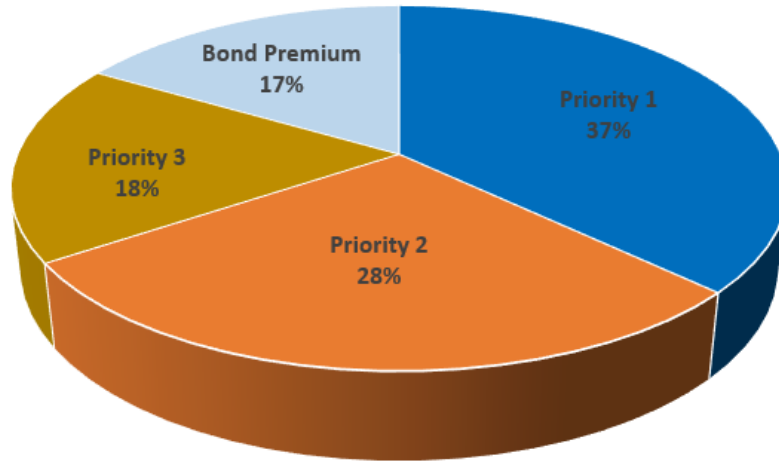
Big Thompson ES

Example of move
plans for site staff



Priority Items - Reporting

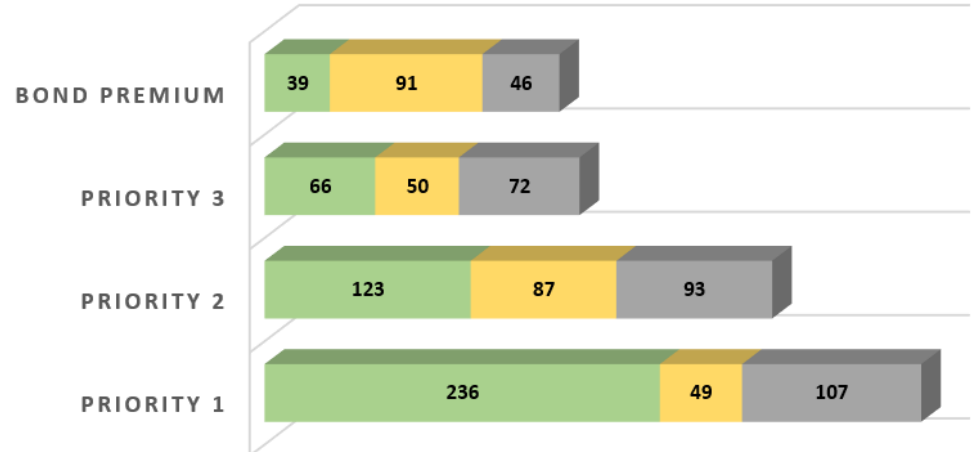
BOND LINE ITEMS BY CATEGORY



- ✓ 1,059 Line Items
- ✓ Will Update for August

STATUS BY CATEGORY

Complete Underway Remaining



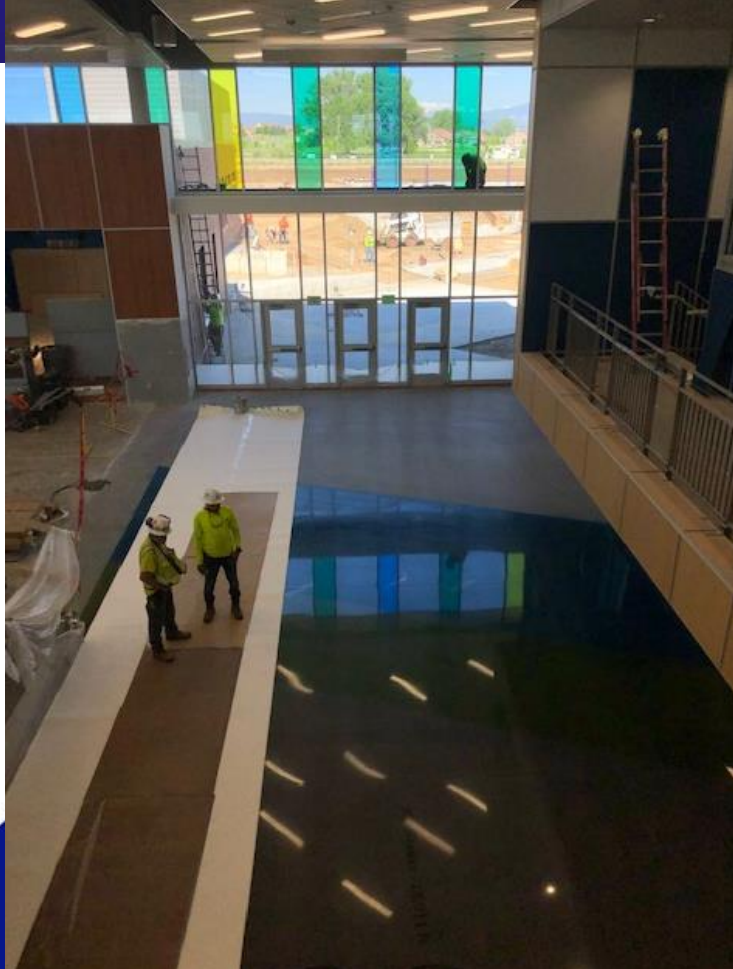
Riverview PK8



#WeAreThompson



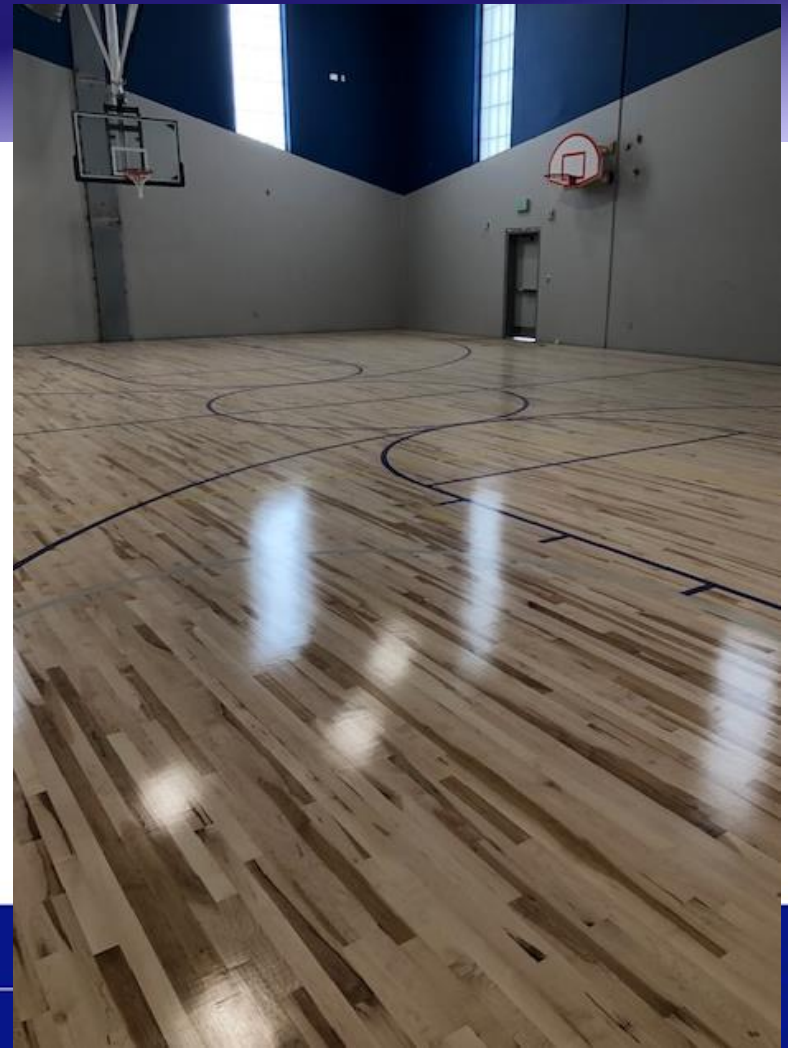
Riverview PK8



#WeAreThompson



Riverview PK8



Thank You Voters!

Summer
BREAK

